



Mayco® FUNDAMENTALS®

Mayco Fundamentals Underglazes

D111-11 bottle • 1 pint

D111-21 12-Pint Class Pack

● Formulated to enhance performance characteristics for broader firing range, applicability to surface, and versatility in design. Use them with translucent gloss glazes, crystals, and stoneware glazes for beautiful glaze combinations. Apply to bisque or clay. Colors maintains their vibrancy from Cone 06 to Cone 10. Apply one coat for brush work and design and three coats for opacity. Cover with Mayco clear glaze to add gloss finish and make dinnerware safe.

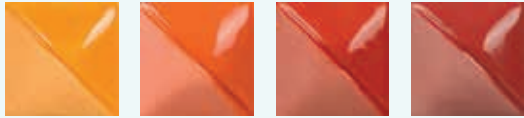
Intermixable. Nontoxic and food safe when clear glazed.

For use on clay or greenware, apply underglazes, allow to dry and fire to cone 04. If desired, apply clear glaze and refire to cone 06-05 for earthenware and cone 05-10 for stoneware. For use on bisque, apply to cone 04 bisque, apply clear glaze if desired and refire earthenware to cone 06/05 and cone 5-10 for stoneware.

● 12-Pint Class Pack – China White, Bright Yellow, Orange, Fire Engine Red, Dragon Red, Regal Purple, Bright Blue, Kings Blue, Apple Green, Leaf green, Chocolate, and Jet Black



● **UG-51** China White **UG-222** Soft Yellow ● **UG-46** Bright Yellow **UG-203** Squash Yellow



UG-223 Apricot ● **UG-204** Orange ● **UG-206** Fire Engine Red ● **UG-208** Dragon Red



UG-215 Blush **UG-224** Rose **UG-92** Lilac ● **UG-87** Regal Purple **UG-225** Plum **UG-226** Lavender **UG-93** Wild Violet **UG-227** Concord Grape **UG-3** Baby Blue



UG-72 Wedgewood Blue ● **UG-97** Bright Blue ● **UG-1** Kings Blue **UG-82** Tucson Turquoise **UG-219** Marine Blue **UG-229** Aquamarine **UG-230** Blue Grass **UG-231** Lime Green ● **UG-68** Apple Green



UG-233 Eucalyptus ● **UG-21** Leaf Green **UG-232** Olive **UG-234** Ivory Pearl **UG-235** Oatmeal **UG-57** Spice Brown ● **UG-31** Chocolate **UG-236** Grey ● **UG-50** Jet Black

Mayco Designer Liner

D113-11 each • 1.25 oz

● 1.25oz. bottles. Concentrated, clay-based pigments can be applied directly on clay, bisque, or over other glazes. Fires to a matte finish, although a clear or transparent glaze will give the liner a gloss finish. Will fire from Cone 05/06 to Cone 6. Comes in a squeeze bottle with a metal writer tip that is almost as accurate and precise as a ballpoint pen. A liner brush can also be used for application. Quick drying, Food safe, but may not suitable for dinnerware due to surface characteristics. Nontoxic.

DESIGNER LINER



SG-401 Black **SG-402** White **SG-403** Red **SG-404** Blue **SG-405** Green



SG-406 Brown **SG-407** Yellow **SG-408** Orange **SG-409** Bright Green **SG-410** Bright Blue





Stroke & Coat®

Stroke & Coat Glazes

D112-11 each • 8 oz

● Stroke & Coat is specially formulated for application on bisque or clay. Ready to use colors stay true from jar to finish. Colors are intermixable. Apply one coat for translucent effects, three coats for rich, opaque coverage. Perfect for controlled application over unfired glazes. All colors and glazes are non-toxic and dinnerware safe. Do not spray apply.

One fire Decorating and Glazing! Bisque Firing use Cone 04-03. Glazing Firing use Cone 06-Cone 6



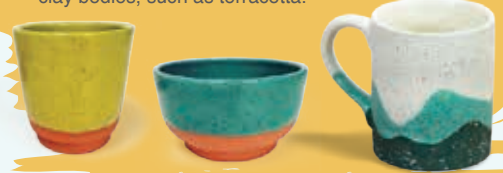
Speckled Stroke & Coat Glazes

D112-41 each • 8 oz

● Mayco's Speckled Stroke & Coat Glazes are an enhanced version of the popular Stroke & Coat Wonderglazes. The addition of small specks of color to the base glaze provides visual depth and texture that does not melt or flow during the glaze firing. Fire to shelf Cone 06-05. Can be high fired up to shelf Cone 6 or higher. Dinnerware safe. Non-toxic.



Speckled Stroke & Coat® glazes provide a fun visual interest! Apply directly to wet or leatherhard clay bodies, such as terracotta.



Stroke & Coat Crystal Clear Brushing

D112-21 each • 1 pint • S2101P

D112-22 each • 1 Gallon • S2101G

Stroke & Coat Crystal Clear Dipping

D112-31 each • 1 Gallon • S2000G





Jungle Gems™ Crystal Glaze

D115-11 bottle • 4oz.

D115-21 6-4 oz. Class Pack 1

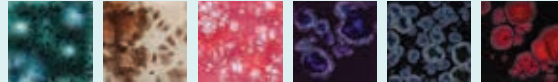
D115-22 6-4 oz. Class Pack 2

D115-23 6-4 oz. Class Pack 3

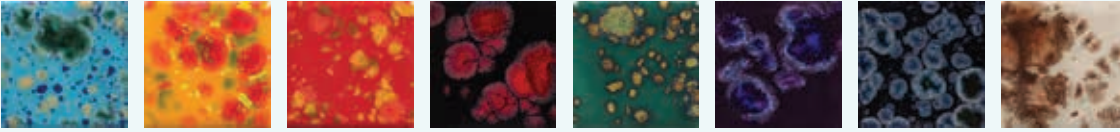
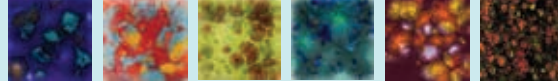
6-Pint Class Pack 1 – CG7564 Firecracker, CG7534 Sassy Orange, CG7184 Blue Caprice, CG7804 Mystic Jade, CG9584 Lagoon Blue and CG7984 Black Blue



6-Pint Class Pack 2 – CG9744 Bloomin' Blue, CG7954 Yadro Print, CG9684 Peppermint Twist, CG7854 Royal Fantasy, CG7864 Obsidian, and CG7794 Black Opal



6-Pint Class Pack 3 – CG9584 Wildfire, CG9644 Kaleidoscope, CG7174 Pistachio, CG9624 Blue Azure, CG9694 Floral Fantasy, and CG9704 Masquerade



CG-718 Blue Caprice

CG-753 Sassy Orange

CG-756 Firecracker

CG-779 Black Opal

CG-780 Mystic Jade

CG-785 Royal Fantasy

CG-786 Obsidian

CG-795 Yadro Print



CG-798 Black Iris

CG-954 Wildfire

CG-958 Lagoon Blue

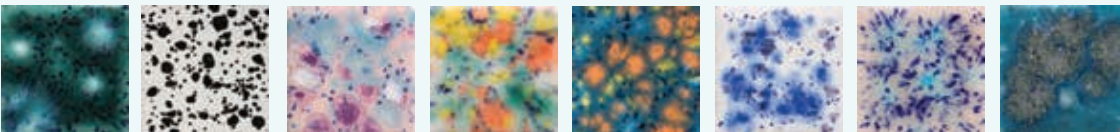
CG-964 Kaleidoscope

CG-965 Mocha Marble

CG-968 Peppermint Twist

CG-969 Floral Fantasy

CG-970 Masquerade



CG-974 Bloomin' Blue

CG-977 Ink Spots

CG-998 Pink Pixie

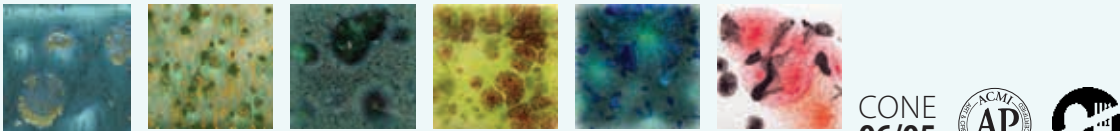
CG-981 Fruity Freckles

CG-983 Koi Pond

S-2701 Peacock Eyes

S-2702 Northern Lights

S-2711 Tahiti Grape



S-2712 Monsoon Seas

S-2714 Herb Garden

CG-713 Peacock Green

CG-717 Pistachio

CG-962 Blue Azure

S-2727 Poppy Fields

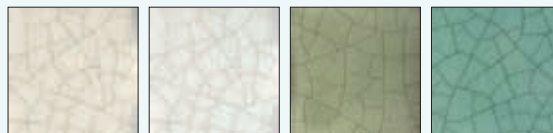
CONE 06/05
(998°C - 1031°C)
(1828°F - 1888°F)



Mayco Classic Crackles Glazes

D114-11 bottle • 4oz.

● Add a vintage or antiqued look to pottery. These glazes are designed to craze. Simply apply these coats to properly fired shelf Cone 04 bisque with a broad. Soft brush, then fire to shelf Cone 06. Food safe, but may not be suitable for food surfaces due to surface characteristics. Nontoxic.



CC101 Transparent Crackle

CC101 White Crackle

CC101 Green Tea

CC101 China Sea





Mayco® Foundations® Glazes

Perfect for layering and combinations. Easy to apply and dries quickly. Fires to a smooth, level finish. Firing range 06/05. Nontoxic and dinnerware safe. Available in gloss opaque, gloss translucent sheer and soft matte finishes.

CONE
06/05
(998°C - 1031°C)
(1828°F - 1888°F)



Foundations® OPAQUE

D116-11 pint

● Broad palette of colors that produce a beautiful, smooth high gloss finish and can be intermixed for custom colors.

FN-001 White	FN-014 Antique White	FN-002 Yellow	FN-044 Yellow-Orange	FN-040 Pumpkin	FN-052 Tangerine	FN-051 Strawberry	FN-003 Orange	FN-004 Red	FN-035 Deep Red	FN-047 Light Pink
FN-005 Pink	FN-048 Bright Pink	FN-012 Lavender	FN-011 Light Blue	FN-034 Big Sky Blue	FN-031 Corn Flower Blue	FN-018 Bright Blue	FN-006 Blue	FN-041 Medium Blue	FN-019 Dark Blue	FN-042 Teal Blue
FN-046 Sage	FN-053 Mint	FN-037 Chartreuse	FN-007 Green	FN-020 Medium Green	FN-010 Tree Green	FN-008 Brown	FN-039 Light Gray	FN-024 Gray	FN-009 Black	

Foundations® SHEER

D116-21 pint

● These translucent glazes add a tint of color to your work, showcasing surface textures and allowing design details to show through.

FN-239 Spiced Cream	FN-221 Milk Glass White	FN-232 Sun Yellow	FN-240 Pumpkin Orange	FN-233 Ruby Red	FN-236 Miami Pink
FN-234 Royal Purple	FN-211 Sheer Blue	FN-238 Royal Blue	FN-237 Light Turquoise	FN-235 Celadon	FN-220 Sooty Grey

Foundations® MATTE

D116-31 pint

● Fires to a beautiful, soft subdued matte finish. Matte finish will increase in glossiness if fired higher than cone 06.

FN-301 Marshmallow White	FN-302 Ivory Cream	FN-304 Black Velvet

GENERAL USE:

Foundations® glazes were designed to mature at a shelf cone 06/05. Apply 2-3 coats, on cone 04 bisque, allowing surface to dry in-between coats. Foundations® dry quickly and speeds up your ability to handle or perform additional decorating. Foundations® Opaque and Sheers fire to high-gloss finishes, and therefore does not need to be clear glazed.

Foundations® have been formulated to mature at cone 06/05; however, most will maintain their color at higher temperatures.

輕鬆畫陶瓷 • 自在繪人生

輕鬆畫釉下彩 EZ Paint on Ceramics

C372-11 set • 10 colors

●陶瓷釉下彩是以各式金屬礦物鍛燒所製成，顏料本身沒有使用鉛、鎘、汞等，無腐蝕性、無毒性。加水後即可彩繪噴飾，使用上潤滑度高、附著力強，燒成溫度950℃~1230℃，成色鮮豔穩定，不會因溫度的高低而改變或燒失，並可自由調色、混色。水溶性，如沾污衣物、器具，只需用清水擦拭沖洗即可除去。



亮白瓷碟

White Porcelain Plate

G138-31 A • each • Round Plate 5"(Dia.)

G138-32 B • each • Round Plate 8"(Dia.)

T240-41 C • each • Plastic Plate Holder 3"

●可自由繪畫著色，亮白易上色，另可創作水晶膠工藝乾花及相片擺件永久留念。

Suitable for glass painting and porcelain painting.



高溫素磚

Bisque Fired Ceramic Tiles

G137-11 each • 4" x 4"

G137-21 each • 6" x 6"

●本產品是以高壓鑄模再燒製的白素燒瓷磚，磚芯堅硬不變形，易於繪畫上色，嘗試以素磚為繪畫題材，色彩乾透後再用日本光油塗上表面保護，完成後畫面別緻耐用。Bisque tiles can be painted with many different kinds of paints. Tiles will not be deformed in High Fire when placed on flat surface. Use for glazes testing on the back of the tiles and for drawing on the surface.



亮白瓷杯

White Porcelain Mug

G138-22 A • each • 10cm(H)

G138-23 B • each • 12cm(H)

G138-24 C • each • 8cm x 9.5cm(H)

●A/B款杯身形狀，適合用來繪畫玻璃畫及瓷彩畫。C款白色咖啡杯骨瓷製，輕巧潔白，獨立紙盒包裝。

Suitable for glass painting and porcelain painting.



推坭墊板

Canva Cloth Board

TT047 each

●方便推拉陶泥，得心應手，尺寸為12"x12"。大量訂購，可自訂尺寸。適合學校使用。Canvas Cloth snaps firmly over 12"x12" board.



實用收納箱

Storage Box

G121-11 each

●外形29x44x8cm(H)，盆內計26x41cm，能疊放省地方，適用陶藝及重型物件。



陶藝工具組

Pottery Tool Kit

TT046 set • #9808

●共有8款陶藝工具，非常實用。

Kit includes: Boxwood Potter's Rib, Boxwood Modeling Tool, Ribbon Tool, Sponge, Needle Tool, Loop Tool, Metal Scraper, Wire Clay Cutter.



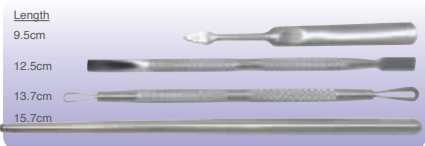
不鏽鋼捏塑工具

Stainless Steel Modelling Tools Set

T351-11 set • 4 pcs

●一套4支，以不鏽鋼製造。

Sets of 4 durable stainless steel modelling tools.



紅木坭批工具

Royal-Art Modelling Tools Set

T371-11 set • 5 pcs



膠坭盆

Economic Plastic Basin #370

G118-11 φ173mm x 7cm(H)

●塑膠平底盆，適合個人捏作，年幼學生容易控制場地整潔。



修坯工具 RIBBON TOOLS

海外貨品，存貨量有限，請早預訂

8 修坯刀

Ribbon Tools

TT008 6" • 6 pcs/set



9 修坯刀

Ribbon Tools

TT009 8" • 7 pcs/set



10 修坯刀

Flat Stainless Wire Ended Tools

TT010 8 3/4" • 7 pcs/set



11 修坯刀

Ribbon Tools

TT011-1 8" • 9 pcs/set



F.8 F.9 F.10 F.11 F.12 F.13 F.14 F.15 F.16

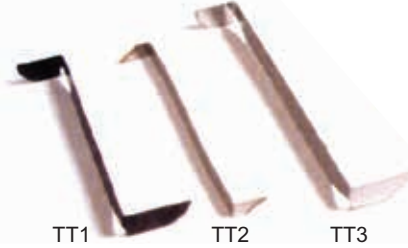
12 修坯刀

Turning Tools

TT012-1 TT1

TT012-2 TT2

TT012-3 TT3

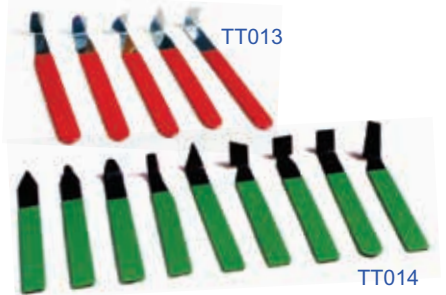


13,14 修坯刀

Turning Tools

TT013 5 pcs • set

TT014 9 pcs • set



Royal-Art 黏土工具套裝

Royal-Art Tools Set

T371-21 11 pcs • set



陶藝泥槍

Clay Gun

M122-21 large • set

● Medium sized hand held clay extruder supplied with 5 dies and 1 blanks. Clay can be loaded at either end of the barrel. Easy to disassemble for cleaning.



16x16mm 15mm 16mm dia.
5mm dia.x12 8x30mm blank

日本黏土泥槍

Clay Gun

M122-11 small • set

● 19 embouts interchangeables.



48 雕塑木刀-1

Box Wood Modelling Tools - 1

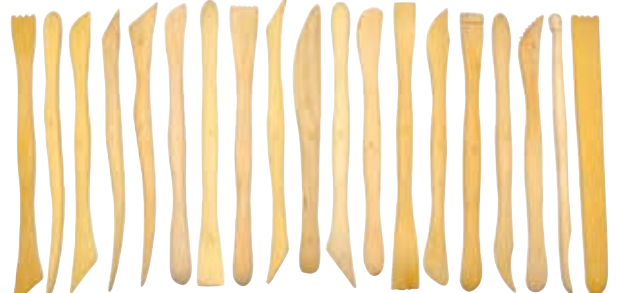
TT048-1 8" • 19 pcs • set #1-19



48 雕塑木刀-2

Box Wood Modelling Tools - 2

TT048-2 8" • 19 pcs • set #20-38



鋼針

Needle Pin

TT001 each

- Approx. 15.5cm Long



雙頭工具組合

Sculpting Tools

TT002 7 pcs set



單頭鋼絲刀6"

Wire End Tool 6"

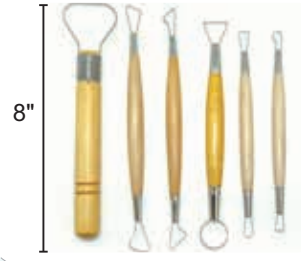
TT003 6 pcs set



雙頭鋼絲刀8"

Double Wire End Tools 8"

TT004 set



木片

Potters Ribs

TT005 10 pcs set



壺把

Teapot Handle

TT015 each



壺把

Teapot Handle

TT016 each



壺把

Teapot Handle

TT017-1 TH8

TT017-2 TH9



梨形刮刀

Ceramic Loop - Pear

TT006-1 each

- Approx. 14cm Long



木柄抹板

Throwing Sticks

TT018-1 DR8

TT018-2 DR6



木柄抹板

Throwing Sticks

TT019-1 TS8

TT019-2 TS5



木柄抹板

Throwing Sticks

TT020-1 DR1

TT020-2 DR3

TT020-3 DR4



浸釉夾

Glaze Dipping Tongs

TT021 each

- Approx. 30cm Long



鋁測徑器

Aluminium Calipers

TT022 each

- Approx. 30cm Long



鋼絲線

Clay Cutter

TT023 2 pcs set



切土器

Wired Clay Slicer

TT024 each



馬蹄形金屬坭刮

Clay Cutting Strip

TT025 each

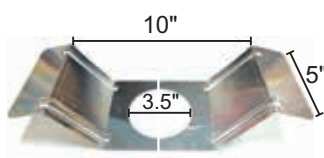
- Approx. 9x7cm



金屬起坯器

Metal Pot Lifts

TT026 2 pcs set



修坯刀8"

Turning Tools 8"

TT027 5 pcs set



橡膠片

Rubber Ribs

TT028 3 pcs set



專用燒製陶坭 POTTERY CLAY

台灣天然陶坭

Pottery Clay (White)

適合初階班學習使用~

M119-31 10 kg

●陶坭加強黏性，不易乾裂，可拉坯及手捏，素燒後呈白色，容易上釉色，價格非常實惠，適合各種年齡使用。10公斤包裝(10公斤膠袋裝，原箱20公斤。) 燒成溫度：1180℃-1230℃；含水量：22%-24%
10kg plastic bag package and 20 kg carton package.



美芯木節陶土

Pottery Clay

M249-11 10 kg

●燒至溫度970℃-1050℃，素燒後呈米白色，適合泥捏及拉坯使用，適用於大型雕塑及高要求之陶藝創作，價格相宜，適合教學使用，台灣出品。每包10公斤。
Fire from 970°C-1050°C. 10 kg carton package.



適合進階班及要求高水準作品之教材~

陶坭 / 白瓷坭(磅裝)

Pottery Clay (1 lb.)

M119-11 A • 1 lb. • brown clay 陶坭

M119-21 B • 1 lb. • White clay 白瓷坭

●分為陶坭及白瓷坭兩種，磅裝方便分配。陶坭加強黏性，不易乾裂；白瓷坭比較柔軟，適合初學使用。
燒成溫度：900℃-1340℃；含水量：24%；收縮率：15%
Choose from brown clay & white clay. 1 lb. plastic bag package.



英國陶坭

U.K. Pottery Clays

大量現貨供應！

M226-11 A • P1230 Semi Porcelain • 10 kg

M224-11 B • P1521 Throwing Earthenware • 10 kg

M223-11 C • P1331 Red Terracotta-Low Fire • 10 kg

M225-11 D • P1546 Rustic Stoneware • 10 kg

M222-21 E • P1260 Ivory Earthenware Clay • 10 kg

M226-21 F • P1221 Translucent Porcelain • 10 kg

●英國陶坭10公斤裝。

A. 半瓷陶坭溫度燒至1160℃-1260℃ (Fire from 1160°C-1260°C.)

B. 拉坯白坭溫度燒至1080℃-1180℃ (Fire from 1080°C-1180°C.)

C. 低溫紅坭溫度燒至1020℃-1160℃ (Fire from 1020°C-1160°C.)

D. 粗砂陶土溫度燒至1180℃-1280℃ (Fire from 1180°C-1280°C.)

E. 象牙白坭溫度燒至1020℃-1160℃ (Fire from 1020°C-1160°C.)

F. 透明瓷陶坭溫度燒至1240℃-1290℃ (Fire from 1240°C-1290°C.)



兒童電動拉坯機套裝

Pottery Wheel

M293-11 set

●手工陶藝的玩具，能提高小朋友的協調能力，體驗創作帶來的成就感。套裝內有拉坯機、陶土、各式切割及雕刻工具。需入電芯2枚。

This can exercise children's handmade ability and develop their art cultivation, improve their coordinated ability. Let them to find fun of DIY and a sense of achievement.



陶藝工具 POTTERY TOOLS

坭塑膠轉盤

Pottery Turntable - Plastic

M182-11 each

●全膠製造，清洗容易不會發霉，全台直徑11"，高1.5"，輕巧易用，適合初學者使用。

Plastic, easy to clean, dia.11", thickness1.5", suitable for beginners.



美芯轉盤

Meisum Turntables

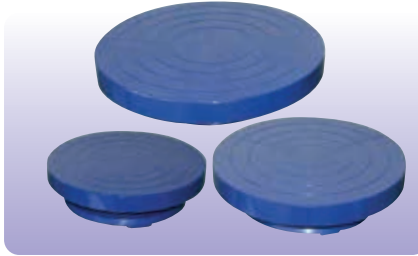
M297-30 Dia.30cm (4.5KG)

M297-26 Dia.26cm (4KG)

M297-23 Dia.23cm (3KG)

M297-19 Dia.19cm (2KG)

●四款尺寸可供選擇，精美焗漆，堅固耐用。



坭塑鋼轉盤

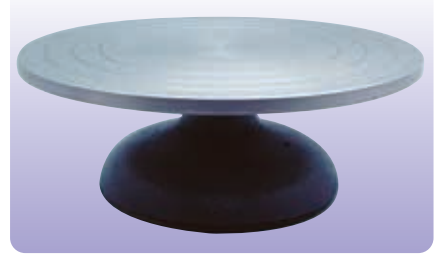
Pottery Turntable - Steel

M182-21 large

M182-22 small

●鋼板高身枱面，堅固耐用，適合重型泥塑工作。

Large Size: dia.30x10cm (H)
Small Size: dia.17x9cm (H)



拉坯機 POTTERY WHEEL

www.meisum.com



MS04 美芯電動拉坯機 MEISUM ELECTRIC WHEEL

台灣款式，國內組裝，220V，適合教學用途，經濟實惠。

Designed for student and hobbyist. Low noise and adjustable feet. A two pieces splash tray for easy cleaning after use.

Dimensions: 53L x 45W x 46H cm

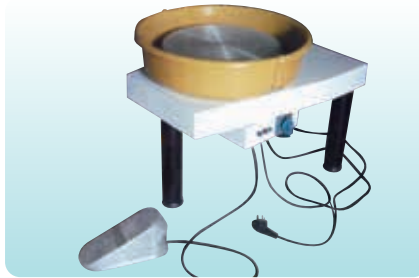
Shipping Weight: 40 kg

Current: 3.5 Amp, 220V

Motor: 1/3 HP reversible

Speed Range: 0-250 rpm

Wheelhead: Alloy dia.35cm



SQ-LP-6 美芯電動拉坯機 ELECTRIC WHEEL SQ-LP-6

220伏特，370瓦，無級變速，左、右運轉，0-300轉/每分鐘，鋁合金盤面直徑30cm，採用電子變速，運轉平穩，扭力大，附有靜音效果。調速靈敏，控制開關器採用進口產品，使用壽命可達一千萬次。

Dimensions: 60L x 47W x 46H cm

Shipping Weight: 42 kgs

Speed Range: 0 - 300 rpm.



SQ-LP-8 枱面拉坯機 ELECTRIC DESKTOP WHEEL

充電一次可連續使用6-7小時。

Designed for student and hobbyist. Low noise and adjustable feet. A two pieces splash tray for easy cleaning after use.

Dimensions: 50L x 21W x 20H cm

Wheelhead diameter: 31.5cm

Voltage: 220Volt.

Power: 300Watt.

Weight: 9 kgs

Speed Range: 0-300 rpm



訂製金屬作品層架 TAILER-MADE METAL SHELVES

- 金屬框架，堅固耐用；
- 原木層板可拉出，配合需要自訂層數；
- 有鎖活動車輪；
- 適合風乾作品。

●自訂尺寸，更能配合環境需要。請來電商議或來圖報價。

TEL: 2493 9200

FAX: 8343 4828

EMAIL: info@meisum.com



小型電窯 KILN

隨機附送耐熱板2塊(14.5cm x 19.5cm)，不需要特別安裝，輕巧易用，連接電源即可使用。

Comes with two heat-resistant plate (14.5cm x 19.5cm), and does not require special installation, lightweight, easy-to-use.

Temperature: 1300°C

Voltage: 220 Volt. **Power:** 1600Watt.

Heating Wire: Kanthal AF級 (左、右各6條)

Chamber: 15cm(W) x 20cm(D) x 15cm(H)

Outer Size: 30cm(W) x 45cm(D) x 35cm(H)

Net Weight: 16 kg

陶藝室工程顧問



本公司提供工程顧問服務，協助學校建立陶藝室、電窯、拉坯機，設計及訂製木傢具，包括木櫃、儲物架、檯椅、乾燥棚等。歡迎來電洽商。

電話：2493 9200

傳真：2414 6266

電郵：info@meisum.com

電窯 CERAMIC KILNS

www.meisum.com

HEATWORKER Front Loading Kiln P5943/MP

Features:

Constructed in a steel shell. Fitted with captive key or electro mechanical interlocks to safely isolate the mains electricity before opening the kiln. High-grade elements for low cost firing. Fast firing capacity. Fitted with power-on, kiln-on warning lamps

Origin : U.K.

Model : P5943 / MP

Power Rating : 9 kW

Max. Temp. °C : 1320 °C

Firing Capacity : 180 litres (6.36 ft³)

Electrical Supply : 15amps 3 phase.

Controller Type : CERA-2 (2-program memory each with 3 segments).

Chamber Dimensions:

42cm W x 58cm D x 74cm H

External Dimensions :

73cm W x 104.2cm D x 165cm H

Weight : 315 kg



CERA-2

- 2 programs each with delay start, 3 heating/cooling ramps, soak, cut off and program pause.
- This is a straight forward controller for pottery firing where usually two programs are used, having three ramps allows for a warming or a cooling phase in the program.



Furniture Kit (P5843):

- 4 x P5485 BATTS 500 x 380mm
- 8 x P5518 PROPS 50mm
- 8 x P5519 PROPS 100mm
- 8 x P5521 PROPS 200mm
- 1 x P3380-01 BATT WASH (1Kg)



HEATWORKER Front Loading Kiln P5942/MP

Features:

Constructed in a steel shell. Fitted with captive key or electro mechanical interlocks to safely isolate the mains electricity before opening the kiln. High-grade elements for low cost firing. Fast firing capacity. Fitted with power-on, kiln-on warning lamps.

Origin : U.K.

Model : P5942 / MP

Power Rating : 7.5 kW

Max. Temp. °C : 1320 °C

Firing Capacity : 135 litres (4.77 ft³)

Electrical Supply : 15amps 3 phase.

Controller Type : CERA-2 (2-program memory each with 3 segments).

Chamber Dimensions: 42cm W x 48cm D x 68cm H

External Dimensions : 73cm W x 94cm D x 156cm H (include stand)

Weight : 270 kg



CERA-2

- 2 programs each with delay start, 3 heating/cooling ramps, soak, cut off and program pause.
- This is a straight forward controller for pottery firing where usually two programs are used, having three ramps allows for a warming or a cooling phase in the program.



Furniture Kit (P5842):

- 4 x P5484 BATTS 380 x 430 x 15mm
- 9 x P5518 PROPS 50mm
- 9 x P5519 PROPS 100mm
- 9 x P5520 PROPS 150mm
- 1 x P3380-01 BATT WASH (1Kg)



Iguana Cone 10 Kilns

Features:

- Front loading door
- Type-K thermocouple with 1/4" sheath
- Two tapered peep-holes in the left side
- 1/2" heavy steel door hinge rod with sealed bearings

Origin : U.S.A.

Voltage : 380 volts three phrases

Watts : 10,800 Watts

Max. Temp. °F : 2350°F

Controller Type : Sentry 12-key 2.0 digital controller with temperature display and audible temperature alarm.

Chamber Dimensions: 18"W x 22.5"H x 18"D

External Dimensions : 36" x 31.5" x 60" H (include stand)

Cubic Feet : 118.93 litres (4.2 ft³)

Weight : 483 lb.



Sentry 12-key 2.0

- Temperature Display throughout firing and cooling in your choice of °C or °F.
- Stop/Back Key goes back one step with each keypress during programming. Use this feature to correct programming errors.
- Program Review lets you check that the program you are about to fire is correct.
- Audible Temperature Alarm to remind yourself to close a vented lid or to check the kiln near firing completion.
- Program Safety Lock for the program in active memory.



Iguana Furniture Kit:

- 3 x C-17 Full Shelves
- 1 x C-17H 1/2 Shelf
- 1" wide Square Posts
- 4 each of 1/2", 1", 2", 3", 4", 5", 6" lengths
- 1 lb. bag Kiln Wash



The digital automatic TnF-82-3 Paragon kiln

Features:

- Easy-access drop down switch box
- Heavy gauge stainless steel case
- A top row of 2" high blank wall bricks
- Coated lid, peepholes and rim of firebricks for extended firebrick life
- 2 wide-view tapered peepholes

Origin : U.S.A.

Model : TnF-82-3

Power Rating : 7.2 kW

Max. Temp.: 2350°F (1287°C)

Firing Capacity : 83.53 litres (2.95 ft³)

Electrical Supply : 30 amps 1 phase, 240 Volts

Controller Type : Sentry 12-key 2.0 Digital Controller

Chamber Dimensions: 41.9cm Dia. x 56.5cm D

External Dimensions :

64.8cm W x 95.3cm H x 71.9cm D

Weight : 103.42 kg



Sentry 12-key 2.0

- Temperature Display throughout firing and cooling in your choice of °C or °F.
- Stop/Back Key goes back one step with each keypress during programming. Use this feature to correct programming errors.
- Program Review lets you check that the program you are about to fire is correct.
- Audible Temperature Alarm to remind yourself to close a vented lid or to check the kiln near firing completion.
- Program Safety Lock for the program in active memory.



Furniture Kit (FSA82B3):

- 3 C-18 Shelves
- 1 C-18H 1/2 Shelf ;
- 1" wide Square Posts,
- 4 of each - 1/2", 1", 2", 3", 4", 5", 6" lengths ;
- 1 lb. Bag Kiln Wash



USEFUL TIPS & INFORMATION

PLACING YOUR KILN

Kiln shelves (batts) should be:

- The correct size for your kiln
- An appropriate thickness in relation to the temperature
- Supported evenly with sufficient gaps to allow air circulation
- Coated in batt wash for glost firings

Ware should be placed:

- At least 5cm from the elements
- Without touching each other
- Evenly distributed in the kiln
- Remember to wipe the feet of glazed pieces or, for earthenware, use stilts
- Using cranks for glazed plates and tiles will save kiln space

FIRING CYCLES

The rate of temperature increase should be:

- **Slow** for a bisque firing (between 90 and 150°C per hour up to 650°C), depending on the size/thickness of the ware
- **Slow** up to 150 °C for a glost firing
- **Slow** if the items have thick or varying cross section